



Accessing Flamingo 1.1 Libraries Located on a Removable Disk

Flamingo 1.1 users frequently ask how to keep their libraries on a removable disk. Often students are looking for a way around losing the library in a machine reset or “Deep Freeze” restoration. Sometimes leaving the library on the hard drive may mean another user could alter it. Here is a way to keep user libraries on a removable and writable Flash or network drive.

Start by Creating a User Library

Note: If you already have an existing library that you want to use, skip to the next section “**Copy the User Library to the Removable Disk.**”

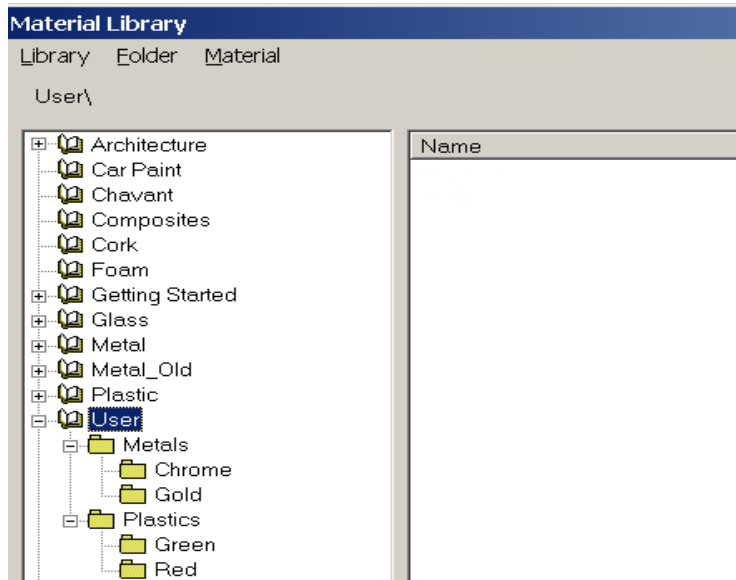
1. In Rhino with Flamingo loaded, from the **Raytrace** menu pick **Materials**. This will start the **FlamingoMaterials** command.
2. From the **Library** menu, pick **New**. In the Name dialog, type the name for the blank user library. We will call it **User**.





Accessing Flamingo 1.1 Libraries Located on a Removable Disk

3. Make folders to organize the library into materials classifications. Do this from the **Folders** menu and pick **New**. Make subfolders, as you like, to categorize your materials.

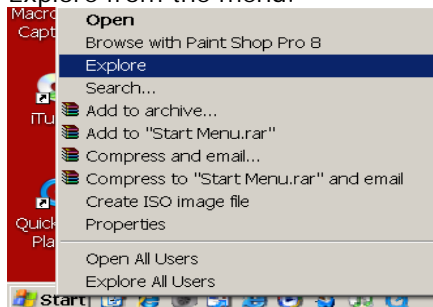


4. From the **Materials** menu, pick **New** to make new materials. Save in the new library and folders we created.

Copy the User Library to the Removable Disk

1. Open File Explorer.

Note: To open File Explorer, right click over the Windows Start button and pick **Explore** from the menu.



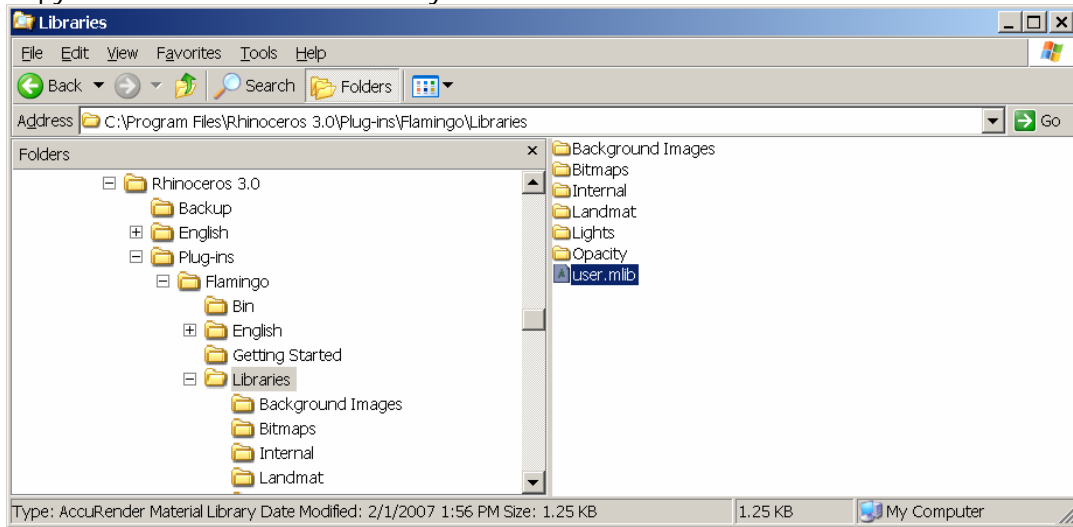
2. After File Explorer opens, navigate to the **C:\Program Files\Rhinoceros 3.0\Plug-ins\Flamingo\Libraries** folder.

Note: By default, Flamingo installs libraries in the following locations:
C:\Program Files\Rhinoceros 3.0\Plug-ins\Flamingo\Libraries
C:\Program Files\Rhinoceros 3.0\Plug-ins\Flamingo\English\Libraries
C:\Program Files\Rhinoceros 3.0\Plug-ins\Flamingo\Libraries\Internal
When looking for an existing library, check all three locations or search the drive.



Accessing Flamingo 1.1 Libraries Located on a Removable Disk

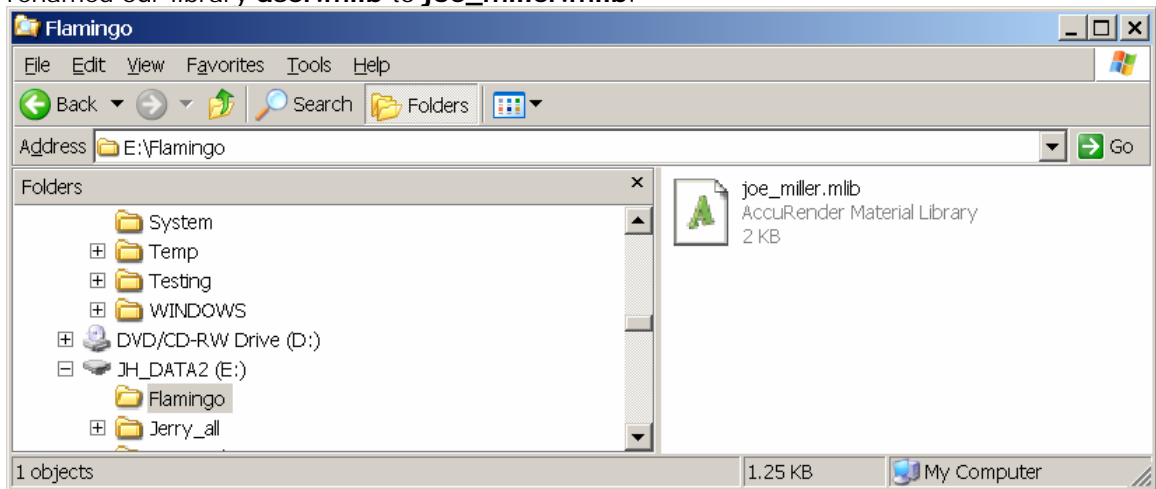
3. Copy the **User.mlib** or other library to the removable drive or network drive.



4. After copying the **mlib** to the removable disk, rename the file to something unique. We suggest naming it after the user or the project.

Warning: Flamingo will display libraries that have the same name. However, it will not show path information. To avoid confusion, name and rename Flamingo libraries uniquely.

5. Our removable floppy is the **E** drive. We made a subfolder named **Flamingo** and we renamed our library **user.mlib** to **joe_miller.mlib**.

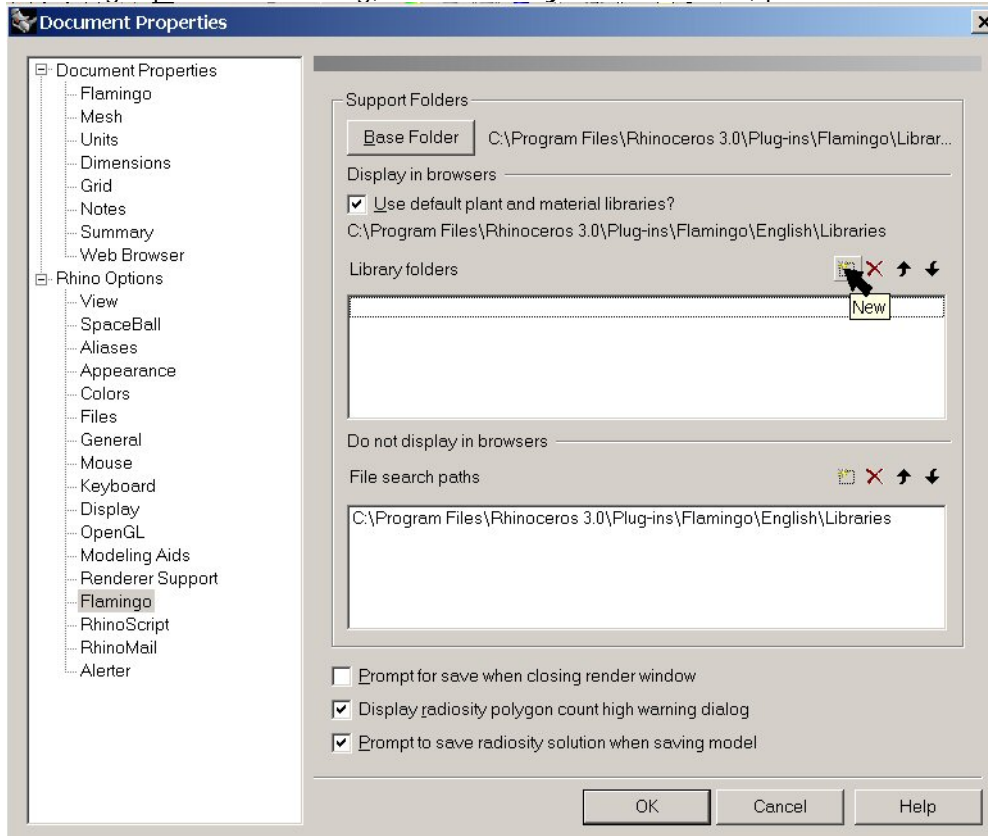




Updating the Flamingo File Search Path

Note: If you are using Deep Freeze or Image Cast, you might consider adding the File Search Library to the machine image. By doing this, each time the machine is reset; this path will already be in the Rhino Options.

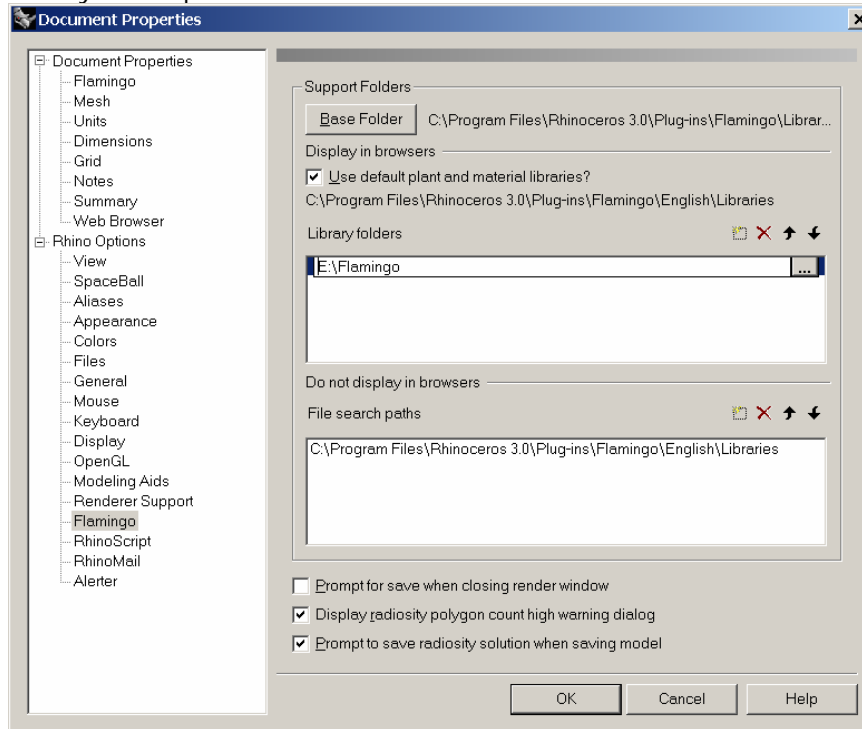
1. From the **Render** menu, pick **Rhino Options**. From the **Rhino Options** dialog, in the left pane, highlight **Flamingo**.
2. In the right pane of the dialog, in the **Library Folders** frame, pick the **New** button.



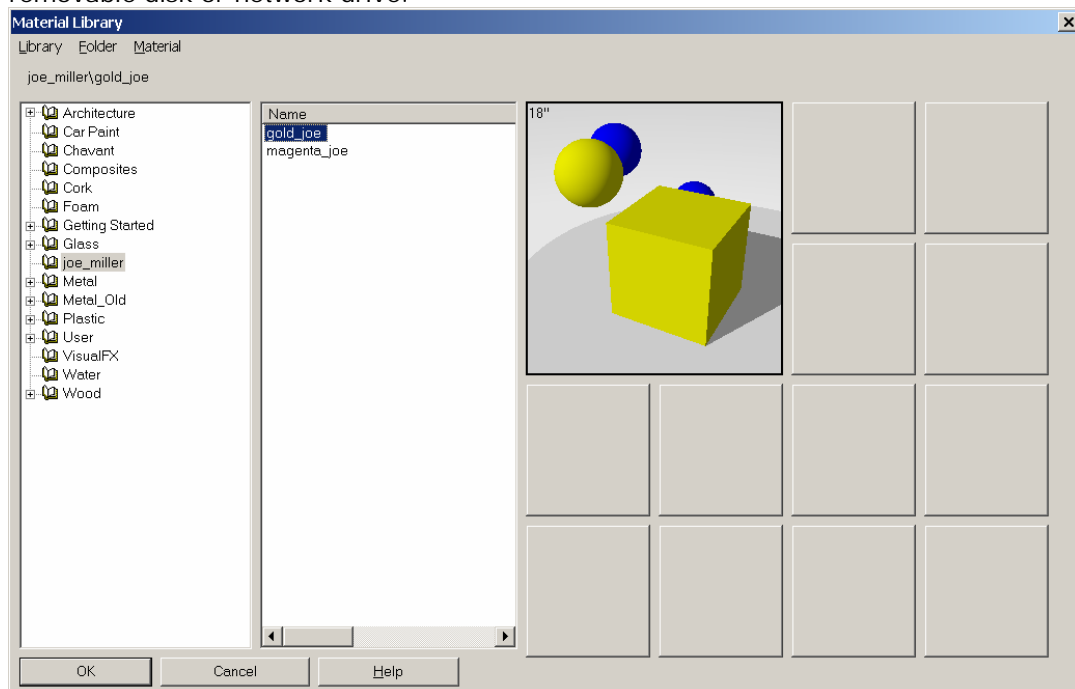


Accessing Flamingo 1.1 Libraries Located on a Removable Disk

3. Type or browse to the removable drive or network drive where the Flamingo User Library was copied. Pick OK.



4. From the **Raytrace** menu, pick **Materials**. In the **Materials** dialog, you can browse to the user library. Now you can create new materials and edit existing materials on the removable disk or network drive.





Accessing Flamingo 1.1 Libraries Located on a Removable Disk

Note: Insert the removable disk or Flash drive before you open Rhino. Inserting the flash drive while Rhino is open, may be unpredictable and may cause Rhino to crash.

Also, if the material is not found, Flamingo substitutes default gray.
