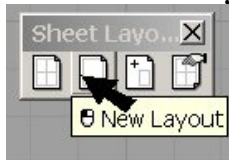


## Adding the Page Layout and Inserting a Title Block

1. Pick the **New Layout** button or type **LAYOUT**.



2. Configure the **New Page Layout** dialog with the following:

Name: **Window Details**

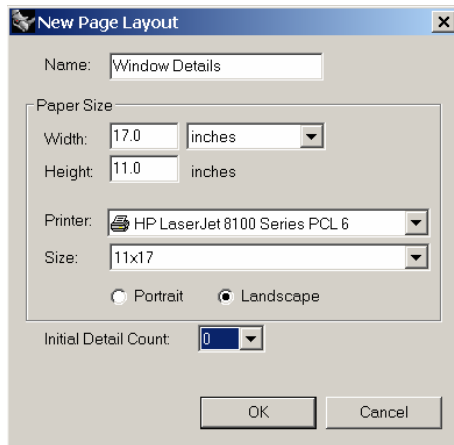
Paper Unit: **Inches**

Width: **17**

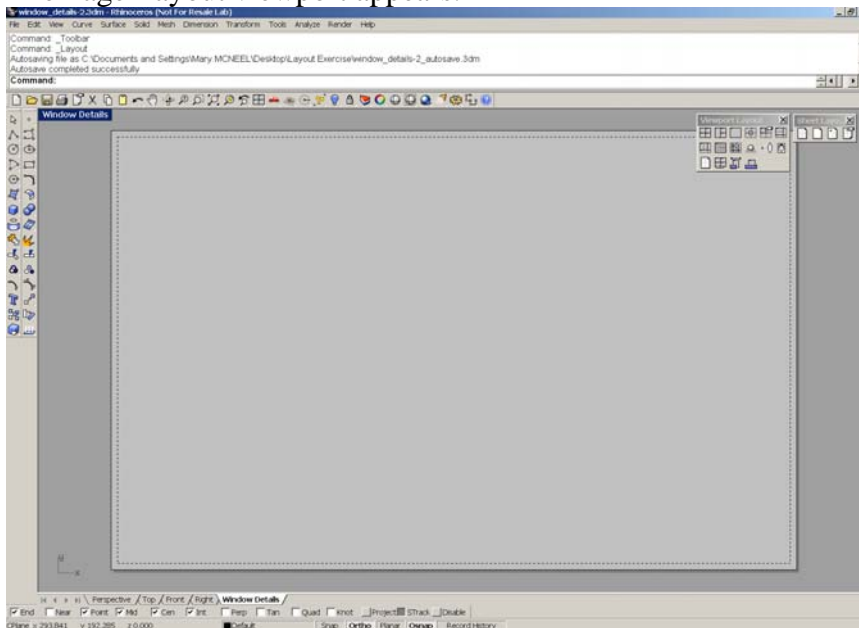
Height: **11**

Printer: **Any printer that can do 11x17 or None.**

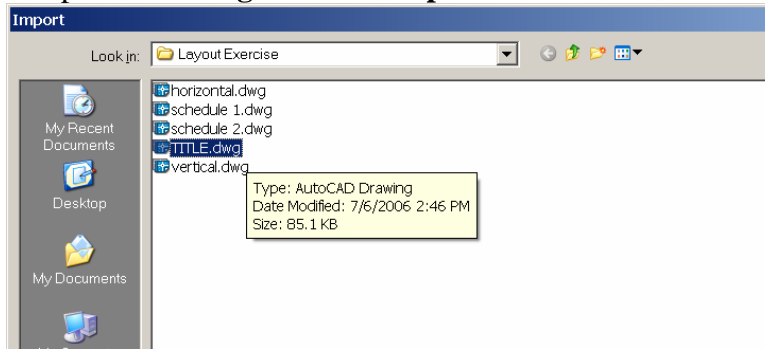
Detail Count: **0**



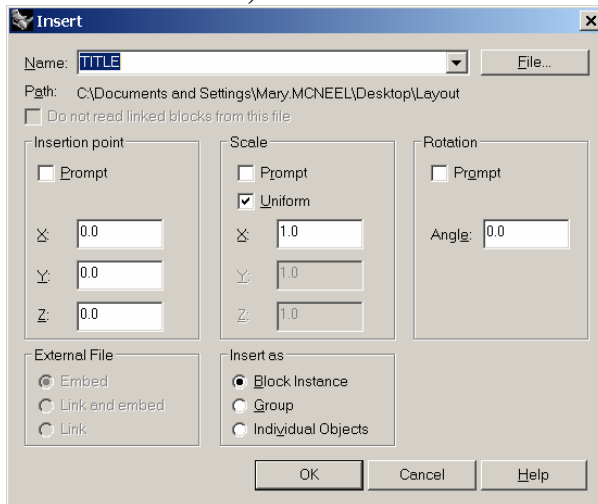
The Page Layout viewport appears.



3. Type **Insert**. From the **Insert dialog**, browse to the location of these training files and pick **Title.dwg**. Click the **Open** button.



4. **Insertion Point: 0,0** or move it to center on the page.



The title block appears.

