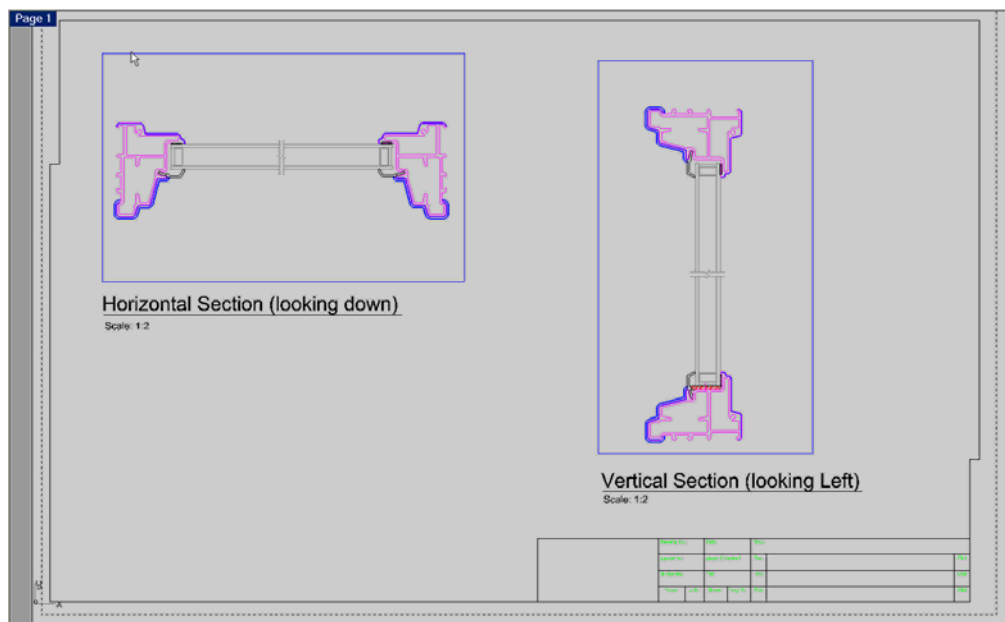
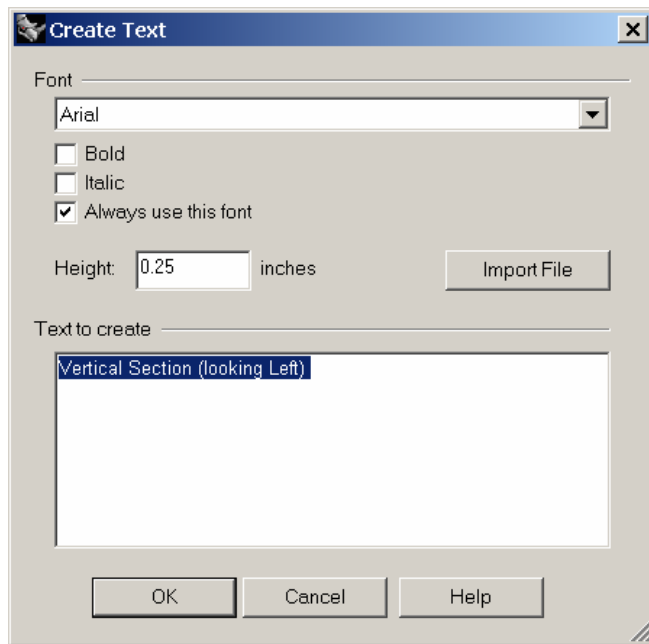


Adding Text to the Page Layout

1. Confirm that the Page Layout viewport is active, not a Detail. From the **Dimension menu**, select **Annotation block**.
2. Pick a start point under the first Detail. Set height of **.25** and text **Horizontal Section (Looking down)**. Under the second Detail, add the text **Vertical Section (looking left)**.



3. Insert **Horizontal.dwg** and **Vertical.dwg** next to the text titles. These blocks will indicate the direction the section is viewing.

