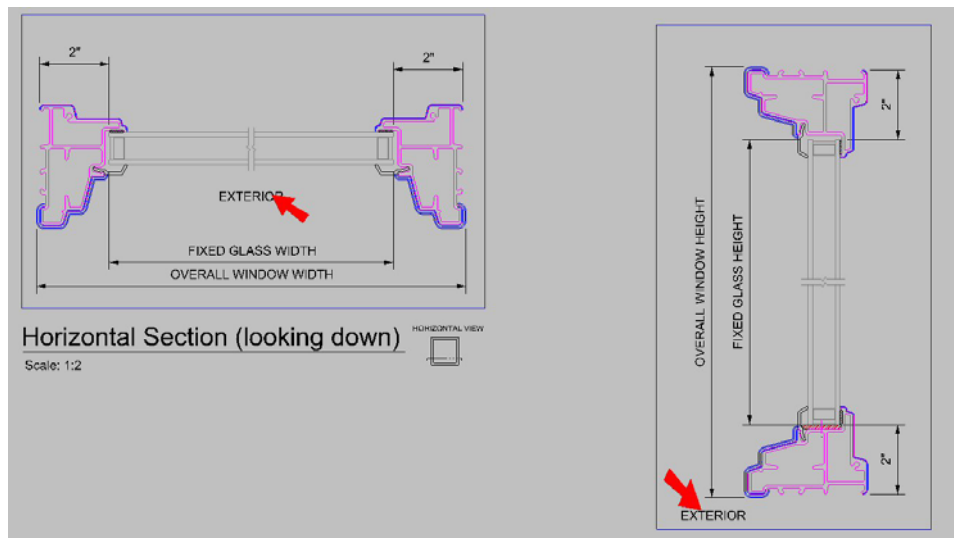
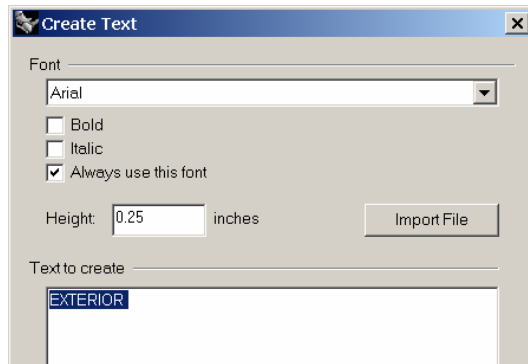


Adding Text to the Detail

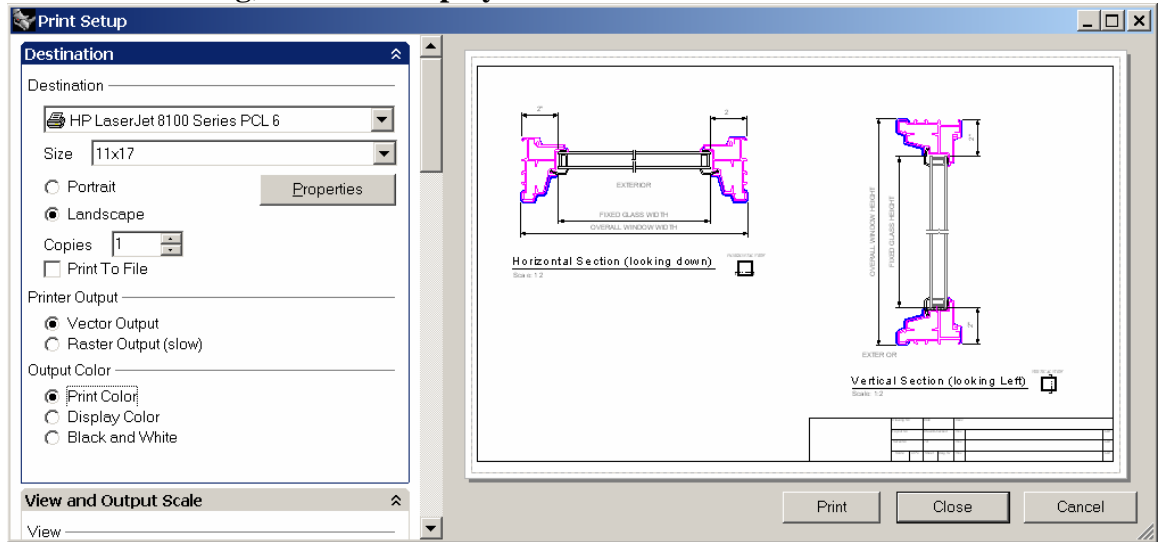
1. Add text inside the Detail. Use a text height of **.25**. Because of the Detail scale is set to $\frac{1}{2}$, the text displays and prints at **.125** units in height on sheet layout viewport

Hint: the printed text height is a product of the text height and the scale factor of the Detail. Fro example
 $.25\text{in.}(\text{text height}) \times .5(\text{scale of Detail}) = .125\text{in.}(\text{printed height})$

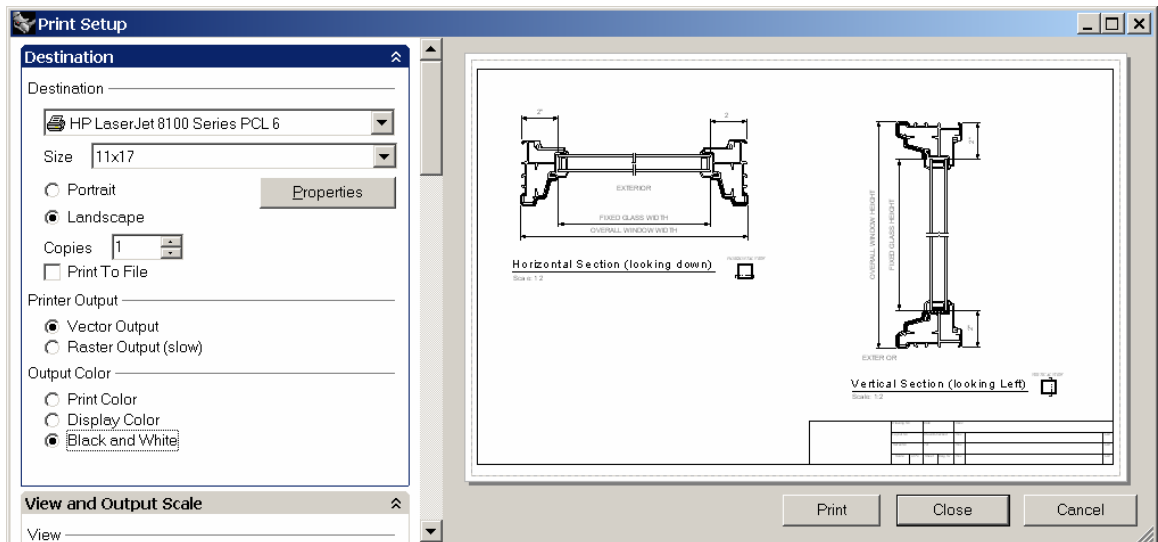
2. You can test this now by comparing the height of the text to the dimension text. Create text on the **Page Layout** that is **.125** and text in the detail that is **.25**. They should display and plot in equal height.



3. In the **Print dialog**, instead of **display color** select **black and white**.



*Output Color set to **Print Color**.*



*Output Color set to **Black and White**.*